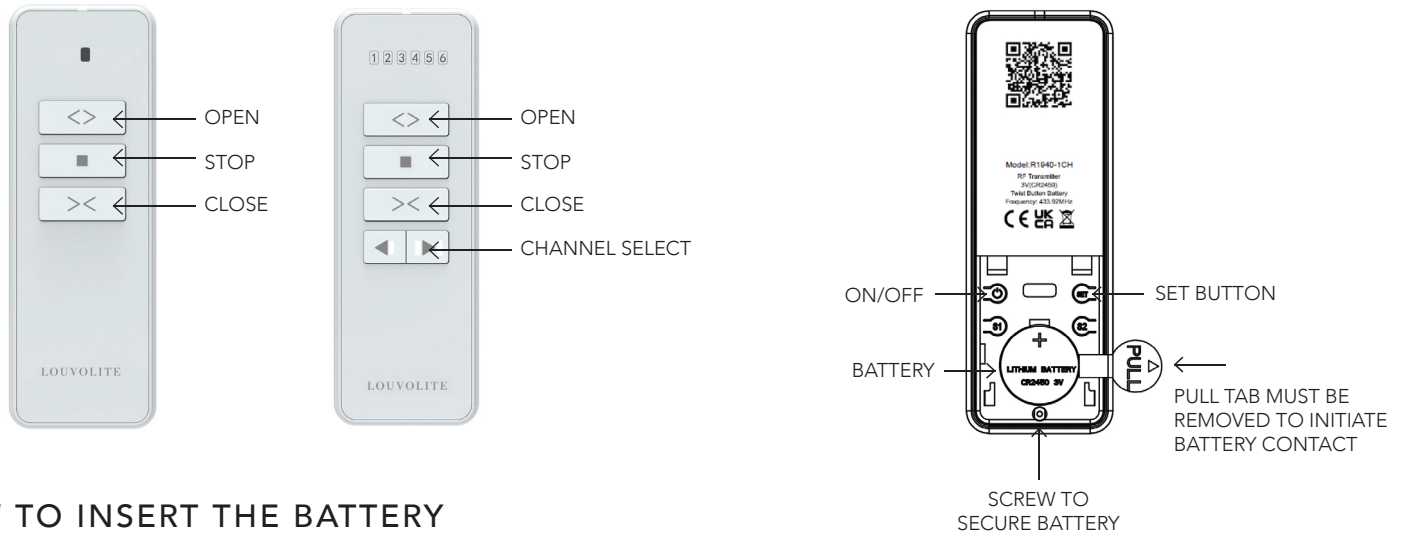


1CH & 6CH CURTAIN MOTOR REMOTE

Operating Instructions



HOW TO INSERT THE BATTERY



1. Loosen the screw.

2. Remove the cover.

3. Insert the battery.

4. Set the blind limits.



5. Replace the cover.

6. Fasten the screw.

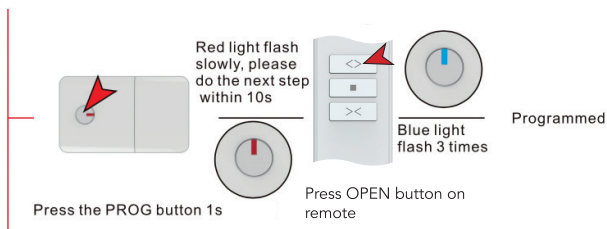


WARNING CONTAINS HAZARDOUS BATTERY KEEP OUT OF REACH OF CHILDREN

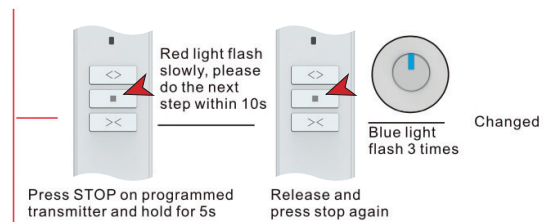
New or used batteries can cause severe or fatal injuries in 2 hours or less if swallowed or placed inside any part of the body. Seek medical attention immediately if you suspect the battery has been swallowed or placed inside any part of the body.

CS2042-1-CH & CS2044-6-CH REMOTE WITH AC MOTOR

1 ENTER PROGRAMMING MODE

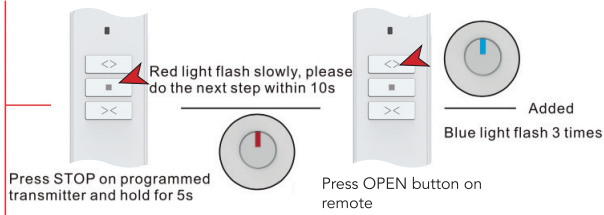


2 CHANGE DIRECTION

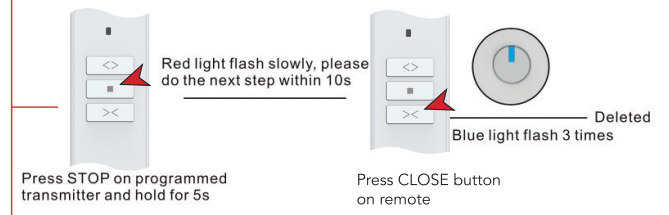


Please select channel for multi-channel remote before operation as 0.5 seconds is needed for up/down converting, max single running time is 4min.

3 PAIR REMOTE

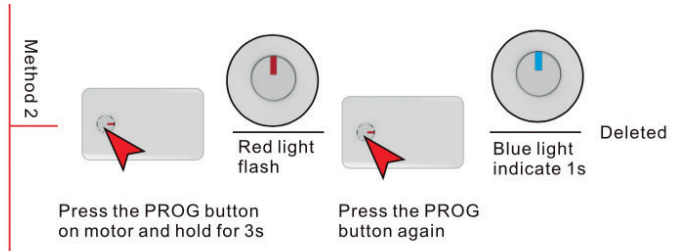
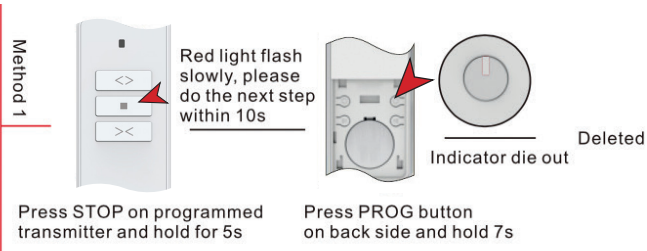


4 DELETE SINGLE CHANNEL

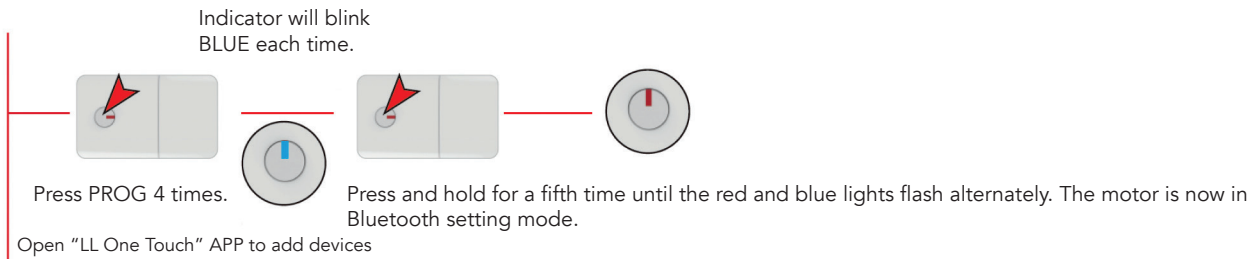


5 DELETE ALL CHANNELS

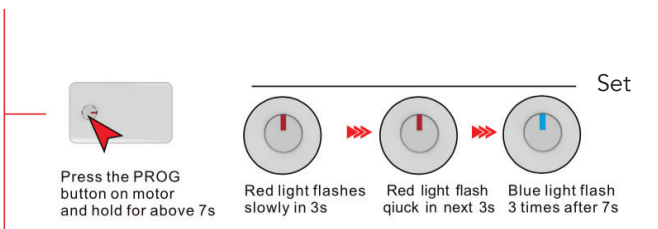
* Channels will be deleted and the motor direction will be reset to factory default mode, keeping the touch function.



6 BLUETOOTH SETTING MODE



7 MANUAL CONTROL FUNCTION



8 MANUAL MOTORISED FUNCTION

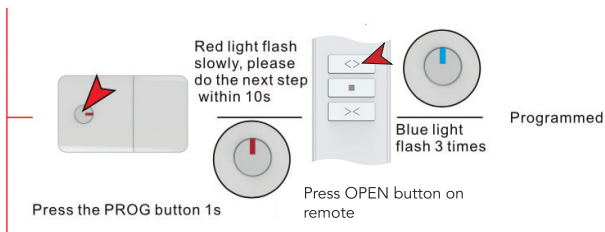
Method 1



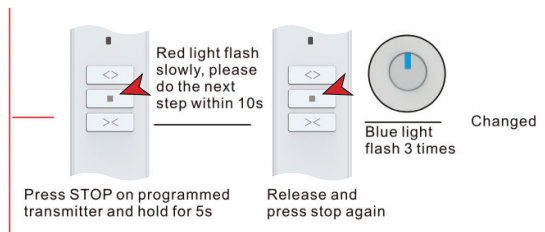
FAQ	SOLUTION
Power on, but motor not responding	Check the motor battery is fully charged. Check remote battery. Check remote is paired.
Motor is working but curtain is not moving	Check the curtain track is assembled correctly.
Motor works automatically	Delete all remotes, program again.
Can't pull curtain manually	1. Pull the curtain backwards, then pull forwards again. 2. Pull the curtain position back 10cm. 3. Charge motor.

CS2042-1-CH & CS2044-6-CH REMOTE WITH LITHIUM MOTOR

1 ENTER PROGRAMMING MODE

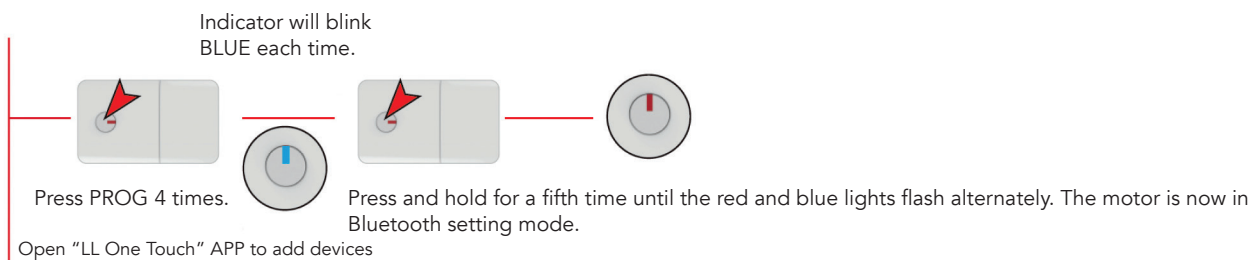


2 CHANGE DIRECTION

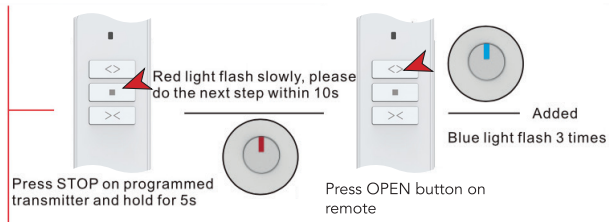


Please select channel for multi-channel remote before operation as 0.5 seconds is needed for up/down converting, max single running time is 4min.

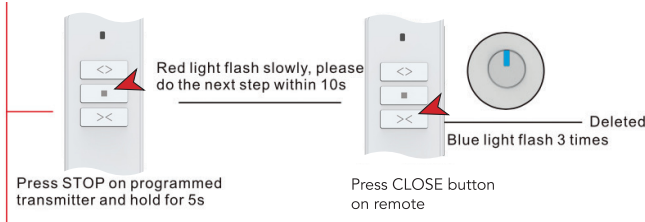
3 BLUETOOTH SETTING MODE



4 PAIR REMOTE

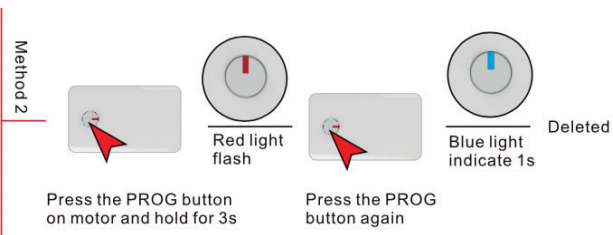
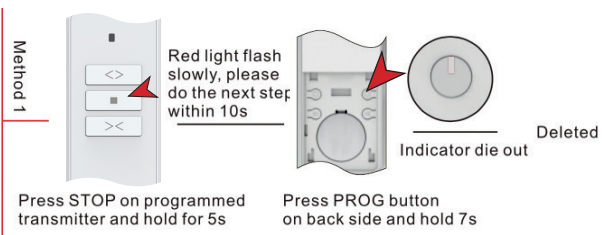


5 DELETE SINGLE CHANNEL

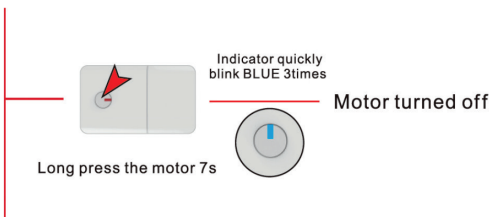
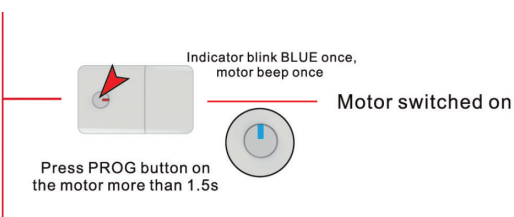


6 DELETE ALL CHANNELS

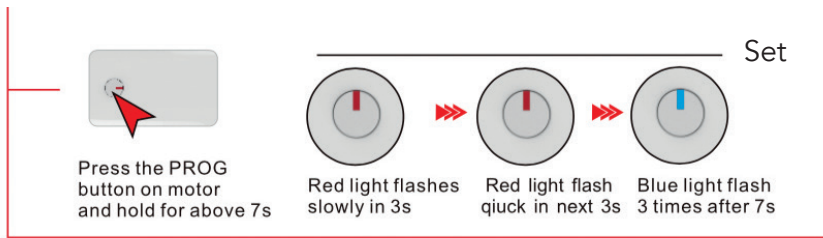
* Channels will be deleted and the motor direction will be reset to factory default mode, keeping the touch function.



7 TURN MOTOR ON/OFF

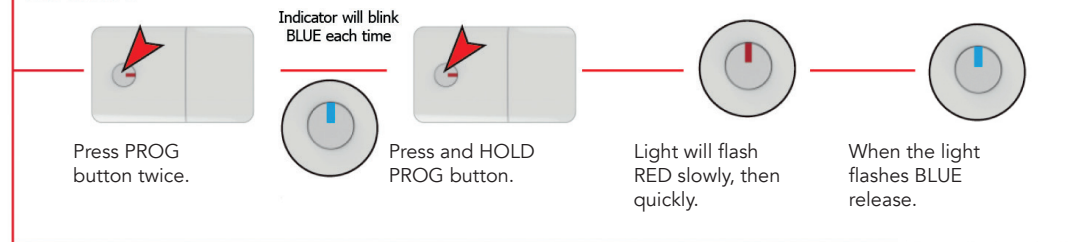


8 MANUAL CONTROL FUNCTION



9 MANUAL MOTORISED FUNCTION

Method 1



FAQ	SOLUTION
Power on, but motor not responding	Check the motor battery is fully charged. Check remote battery. Check remote is paired.
Motor is working but curtain is not moving	Check the curtain track is assembled correctly.
Motor works automatically	Delete all remotes, program again.
Can't pull curtain manually	1. Pull the curtain backwards , then pull forwards again. 2. Pull the curtain position back 10cm. 3. Charge motor.