

LITHIUM CELLULAR & PLEATED MOTOR

Fitting & Operating Instructions



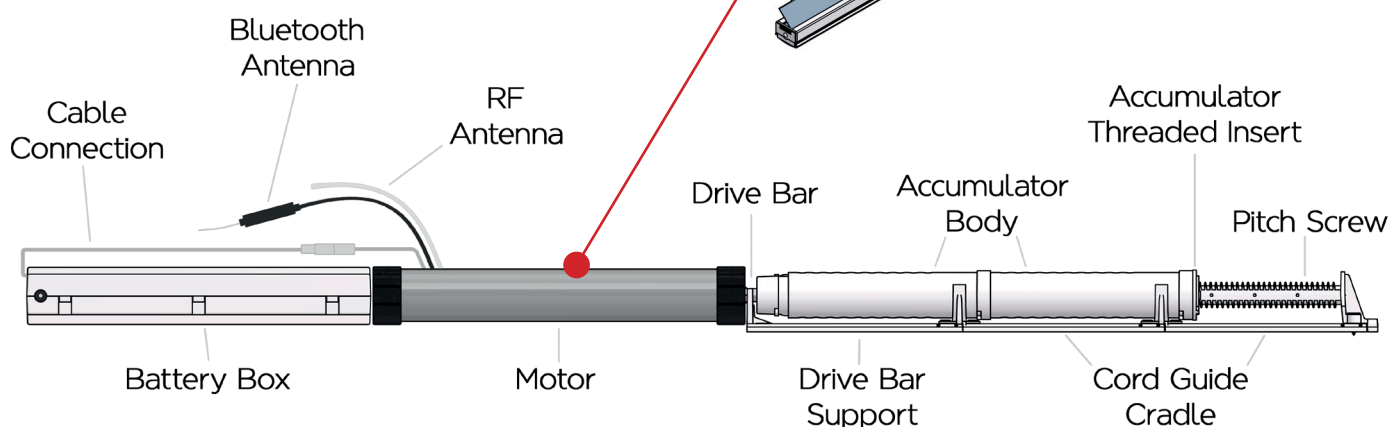
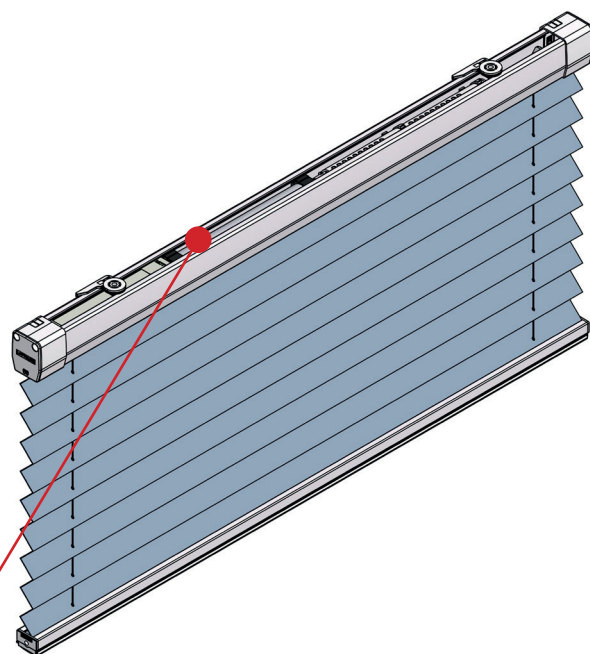
KEY FEATURES

- Low power consumption design, compatible with 7.4V battery box and solar panel.
- Dot move and continuous move for option, free to change the motor run direction.
- Can set multiple limit positions(UP/DOWN/Middle limit positions).
- Position sensor open circuit and short circuit protection function, stop on block function.
- Can detect the circles of motor rotation, high precision.
- Automatic correction function for the displacement caused by braking.
- Power failure can save position and function parameters.

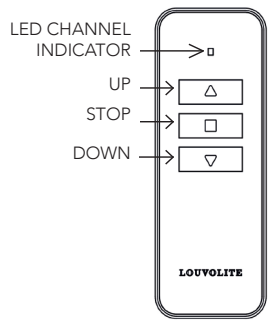
PARAMETERS

Model No.	AM24B-06/34-ES-I-EB
Input Voltage	7.4V
Rated Torque	0.6Nm
Rated RPM	34 RPM
Rated Current	1.2A
Stall Current	2.5A
IP Class	IP44
Control Mode	RF remote control /APP
Working Temperature	-10 ~ +60C°
Receiving Frequency	433.92MHz/2.4G
Modulation	ASK/ Bluetooth
Receiving Distance	≥ 80m

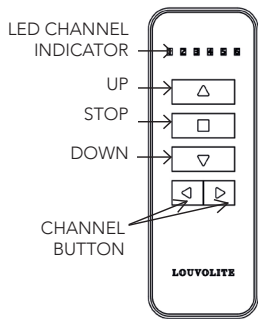
MOTOR OVERVIEW



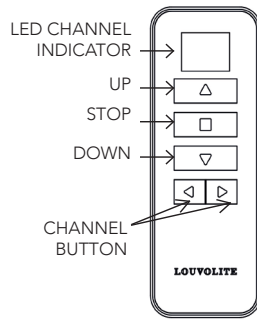
REMOTE LAYOUT



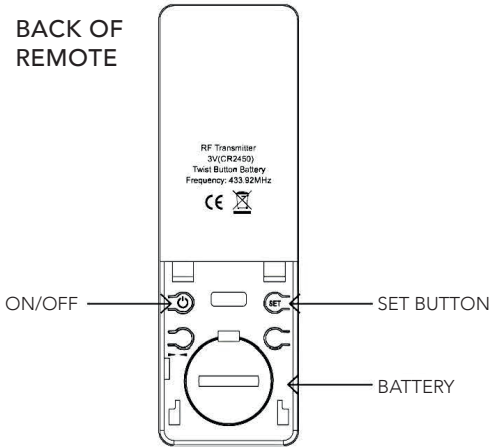
R1940 - 1CH
Push button



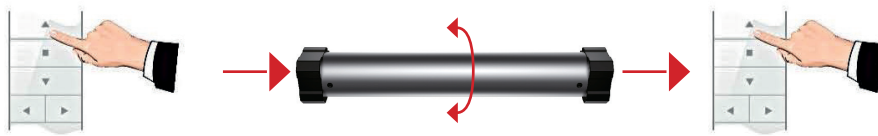
R1942 - 6CH - WH
Push button
Also available in black



R1944 - 16CH
Push button



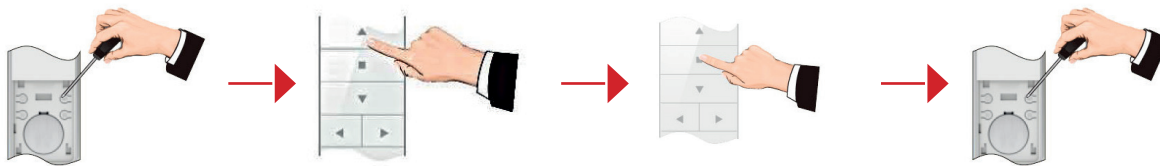
1 ADD REMOTE



Plug motor into battery. Press and hold UP button until the remote oscillates. Press UP button for a second time and the motor will oscillate. Remote is now paired.

2 SETTING UPPER LIMIT

***Setting upper and lower limit must be done in one operation.**



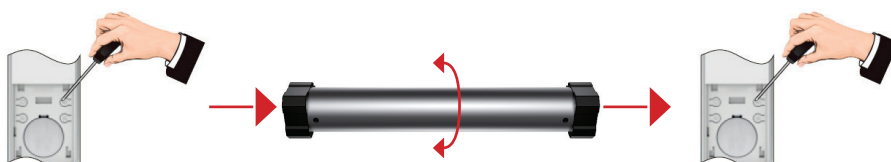
Position blind to below desired top limit. Press SET button on the back of the remote, the motor will oscillate once and is now in setting mode. Press and hold UP button to raise the blind to the desired upper limit position then press STOP. Press SET button to confirm the upper limit, the motor will oscillate once. The upper limit position is now set.

3 SETTING LOWER LIMIT



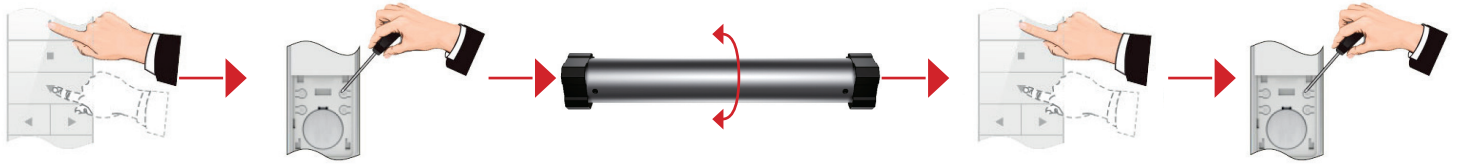
Press DOWN button to the desired lower limit position then press STOP button. Press SET button on the remote, the motor will oscillate once. Press SET button again and the motor will oscillate again setting the lower limit position.

4 SETTING THE MID POINT



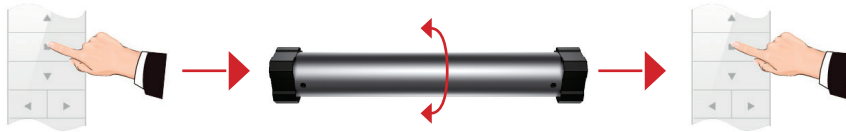
Stop the blind at position to be added. Press SET button on the remote and the motor will oscillate. Press SET button again and the motor will oscillate again adding mid point position.

5 FINE TUNING LIMIT POSITION



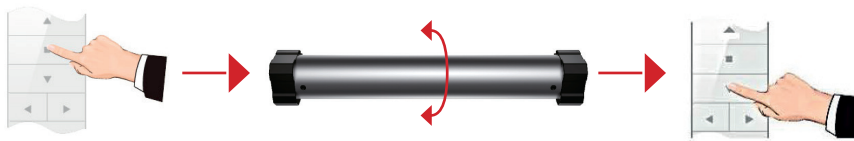
Send blind to position you wish to adjust. Press and hold SET button until motor oscillates. Press UP/DOWN buttons to adjust the blind to the exact limit position. Press SET button again until the motor oscillates, fine tuning limit position is set.

6 JOG MODE



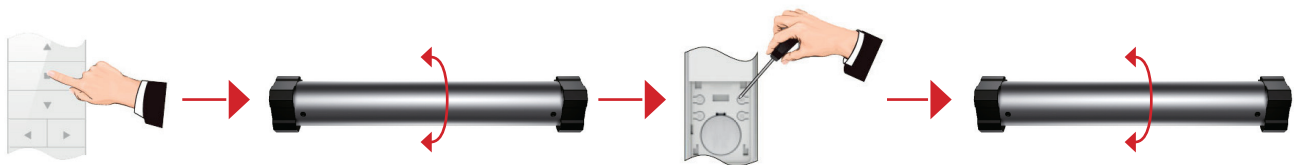
Press and hold STOP button on the remote until the motor oscillates. Press STOP button again, the motor will oscillate again. The movement mode is changed. Repeat to exit jog mode.

7 CHANGE DIRECTION



Press and hold STOP button on the remote until the motor oscillates. Press DOWN button on the remote once, the motor will oscillate again. The movement mode is changed.

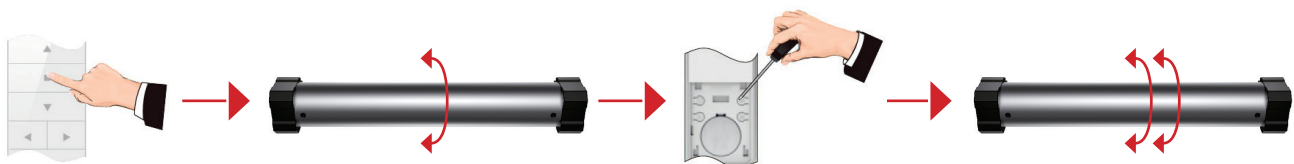
8 DELETE SINGLE CHANNEL



Select channel to delete. Press and hold STOP button on the remote until the motor oscillates. Press SET button on the remote until the motor oscillates again. The selected channels memory is now deleted.

9 FACTORY RESET

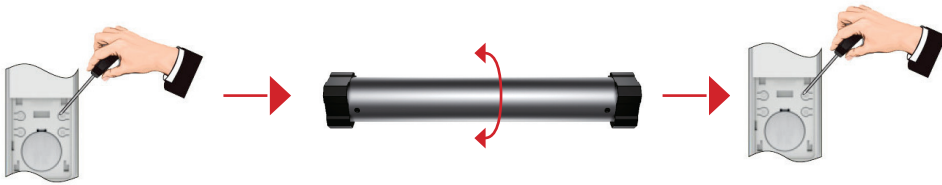
Deleting all memory returns the motor back to factory settings.



Press and hold STOP button until the motor oscillates once. Press and hold SET button, the motor will oscillate once, continue to hold until motor oscillates twice more. Motor has been factory reset.

10 DELETING LIMIT POSITIONS

The first limit cannot be deleted separately, to remove this limit all limits must be deleted.



Let the motor run to the limit position which needs to be deleted. Press and hold SET button until the motor oscillates once, continue to hold until the motor oscillates once more. The preset limit position is now deleted.

FAQ	SOLUTION
Power on, but motor not responding or rotating slowly	Check the voltage is correct. Check motor is installed correctly. Check remote is paired.
The motor stops suddenly during operation	Charge battery Make sure the motor is not being overloaded.