

R1730 REMOTE CONTROL OPERATING INSTRUCTIONS

For use with R1740 Motor (6000 Series)

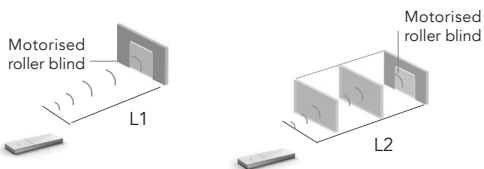


TO CLEAR THE MOTOR:

Press and hold the blue button on the motor until the motor beeps 3 times and then jogs. Keep holding the blue button and the motor will beep a further 3 times and jog. Stop pressing the blue button and the motor will jog once more.

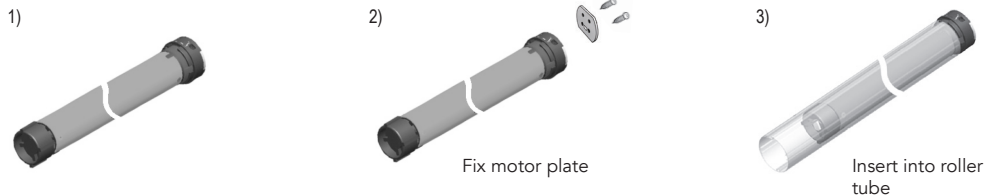
CONTROL RANGE

Transmission distance may be affected by the environment.



	L1 open	L2 Partition	Emission Frequency
120V/60Hz	200m	35m	433.92MHz
220V/60Hz			
230V/50Hz			

DRIVE ADAPTER INSTALLATION

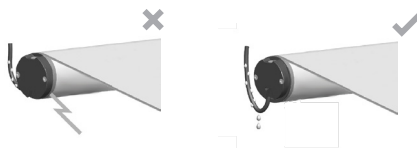


INSTALLATION



ATTENTION

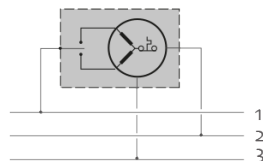
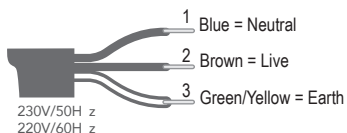
Shape the wire as above to avoid condensation damage.

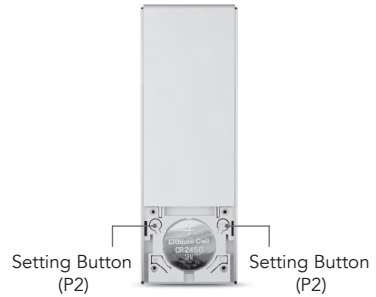
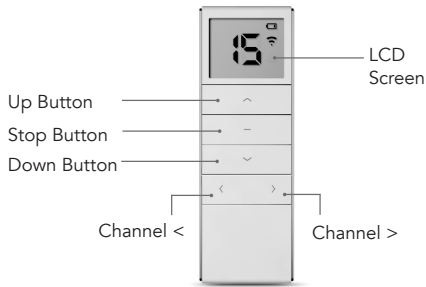


Manufacture the blind according to instructions and fit complete blind using brackets supplied.

WIRING INSTALLATION

Unit must be connected to electricity supply by a qualified electrician.





PAIRING THE HANDSET WITH THE MOTOR

1. Select the channel to be paired.
2. Power up the motor.
3. Press the blue button on the motor to select pairing mode, the motor will beep and jog once.
4. Within the next 4 seconds - Press P2 on the remote and the motor will beep and jog, Press P2 again and the motor will beep and jog. Press UP button on the remote and the motor will beep 3 times and jog once.
5. The blind is now paired.

CHANGING DIRECTION

1. To change direction press and hold the blue button on the motor until the motor beeps 3 times and jogs once.

SETTING THE TOP/BOTTOM LIMITS

Select the same channel and set the top limit. (Top limit must be set first with 6000 series)

1. Set the top limit first and start with the blind half way down.
2. Press P2 on the remote, the motor beeps and jogs.
3. Press UP on the remote, the motor beeps and jogs.
4. Press P2 on the remote, the motor beeps 3 times.
5. The blind is now in limit setting mode.
6. Press the UP button on the remote.
7. Press the P2 button when the blind is close to the top, the blind will go into a slow jog.
8. Press STOP when in the correct position.
9. Press and hold stop until the motor beeps 3 times and jogs once, this confirms the top limit is set.
10. Press the DOWN button.
11. Press the P2 button when the blinds is close to the bottom, the blinds will go in to a slow jog.
12. Press STOP when the blind is in the correct position.
13. Press and hold STOP until the motor beeps 3 times and jogs once, this confirms the bottom limit.

SETTING A MIDPOINT

1. Move the blind to the position to be set.
2. Press P2 the motor beeps and jogs.
3. Press STOP the motor beeps and jogs
4. Press STOP the motor beeps 3 times and jogs 3 times, this confirms setting.

DELETING THE MIDPOINT

1. Press P2 the motor beeps and jogs.
2. Press STOP the motor beeps and jogs.
3. Press STOP the motor gives a long beep and jogs, this confirms the delete.

DELETING ALL LIMITS

1. Press P2 the motor beeps and jogs.
2. Press DOWN the motor beeps and jogs.
3. Press P2 the motor beeps 3 times and jogs once.

DELETING A HANDSET

1. Press P2 the motor beeps and jogs.
2. Press STOP the motor beeps and jogs.
3. Press P2 the motor beeps 3 times and jogs once.

TO CLEAR THE MOTOR

4. Press and hold the blue button on the motor until the motor beeps 3 times and then jogs. Keep holding the blue button the motor will beep a further 3 times and jog, stop pressing the button and the motor will jog once more.

R1740 SAFETY INSTRUCTIONS

WARNING: Important safety instructions. Follow all instructions, since incorrect installation can lead to severe injury. Please save these Instructions. Before installing the drive, remove any unnecessary cords and remove any equipment not needed for powered operation. Install the actuating member of a manual release at a height less than 1.8m.

1. Instructions for use are provided with the appliance so that the appliance can be used safely.
2. If it is necessary to take precautions during installation of the appliance, appropriate details shall be provided in the instructions.
3. Appliance must only be used to drive blinds.
4. Only use supplied driven parts for use with this motor appliance.
5. Keep the product number and data plate in a safe place.

6. This appliance is not intended for use by persons (including children) with reduced physical, sensory or mental capabilities, or lack of experience and knowledge, unless they have been given supervision or instruction concerning use of the appliance by a person responsible for their safety.
7. Children should be supervised to ensure that they do not play with the appliance.
8. Do not allow children to play with fixed controls. Keep remote controls away from children.
9. Frequently examine the installation for imbalance and signs of wear or damage to cables and springs. Do not use if repair or adjustment is necessary.
10. Do not store the motor with strong acid, alkaline, dirty or eroding materials.
11. Do not use the motor in a humid or damp environment.
12. Do not start the motor frequently or overload it as it might reduce the life of the motor.
13. Do not turn the regulating knob or the driving sleeve at non-operation state.
14. If you wish to open the blind under power-off circumstance, you may choose the E series products which carries manual functions, and invite qualified persons to install the handling crank and locks. Please note that the manual function doesn't work when motor is powered on.
15. Do not operate the blinds during maintenance (such as window cleaning) is being carried out in the vicinity etc.
16. The power supply cord should not be exposed to sunlight or rain directly during installation. H05VV of the motor power supply cord can only be used for indoor installations, H05RR or H05RN rubber power cable can be used in outdoor installation; black ordinary tough rubber sheathed cord (60245 IEC 53) is suitable alternative cord for outdoor use, provided that sheath contains at least 2% of carbon in accordance with clause 11 of IEC60811 4 1 (EN 60335 2 97).
17. For installation of blinds, a horizontal distance of at least 0.4m is to be maintained between the fully unrolled driven part and any permanent object.
18. Fixed controls have to be visibly installed.
19. The rate operating time is 10 minutes. The appliance cannot be restarted until the temperature of motor has reached ambient.
20. If it is a remote controlled blind, during maintenance, please disable/close the remote control and power off.
21. When operating the manual release people must take care, since a blind may drop rapidly due to weak or broken springs.
22. If the supply cord is damaged, it must be replaced by the manufacturer, its service agent or similarly qualified persons in order to avoid a hazard.
23. The supply cord of the drive can only be replaced by the same type of cable supplied by the manufacturer of the drive (appliance).
24. If the power supply cord is too short do not use an extension cord, have a qualified electrician install an outlet near the drapery operator.

CAUTION: In order to avoid a hazard due to inadvertent resetting of the thermal cut-out, this appliance must not be supplied through an external switching device, such as a timer, or connected to a circuit that is regularly switched on and off by the utility.