

# ROLLER Fascia 3" & 4" Squared & Curved SIDE CONTROL

## Fitting & Operating Instructions

Carefully unwrap the roller blind and its associated brackets.

The end brackets are universal and can be fixed in a top, face or side fix position. The intermediate brackets can be either top or face fixed only.

**Note – For both the squared and curved fascia the 3" fascia is for use with system 40 and 40+. The 4" fascia for use with the system 45 and 45+.**

### Fitting the brackets

Measure the fabric width and place the brackets 35mm (1 3/8") wider apart than the fabric measurement with two screws in each bracket, ensuring that the brackets are level.

### Fitting the blind

Once the brackets have been fitted the blind can be inserted into the brackets.

With the fabric rolled around the tube offer the idle end (the end with a cross on it) to the bracket.

With the idle end in place offer the operating end to the opposite bracket and secure the blind in place, ensuring the centre lug has dropped into the bracket.

### Fitting the chain guard

On the operating end bracket, a chain guard must now be fitted. The flat side of the chain guard should be located along the inside bottom edge of the bracket. In this position line up the two holes in the chain guard with two holes in the bracket and secure the chain guard in place with the two screws supplied.

### Fitting the cord tidy (if required)

The operating chain on the blind can be either a continuous loop chain or a chain with breakaway connectors.

If fitted with breakaway connectors ensure it conforms with current child safety legislation.

If fitted with a continuous loop chain ensure it conforms with current child safety legislation and fit the attached cord tidy.

### **Fitting the fascia**

Both squared and curved, 3" and 4" fascias work the same way. On the longer side of the fascia a lip curls over the end. This lip hooks over the top, front edge of the bracket. On the inside of the short side of the fascia is a rib. A cutaway slot on the bottom of the bracket will accommodate this rib.

To fit the fascia hang the fascia on the bracket with the long side of the fascia towards the top of the bracket. Allow the short side of the fascia to swing under the bracket, centralise the fascia and push home to trap the rib on the fascia into the slot cut into the bracket.

The fascia comes with fascia end caps. Use the appropriate size and shape for the fascia and push fit the end caps into place.

**Note – The 3" and 4" curved fascia end caps are sided LH and RH.**

## CHILD SAFETY

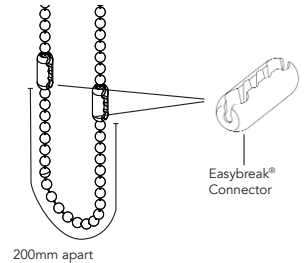
Unless your blind is motorised has a safety wand or is crank operated your blind will be supplied with either Easybreak® connectors attached to the operating chain, or a cord tidy that will need to be fitted to the wall.

### EASYBREAK® SYSTEM

Two Easybreak® connectors are connected to the operating chain 200mm apart. This ensures that at least one of them will be in the vertical position ensuring they perform as required.

If excessive weight is applied within the loop an Easybreak® connector will break apart.

If an Easybreak® connector comes apart then it will need to be re-connected. To re-connect, check the Easybreak® connector for damage. If undamaged, re-connect the chain by inserting the last ball on the end of the chain into the larger hole of the connector and push it into place.



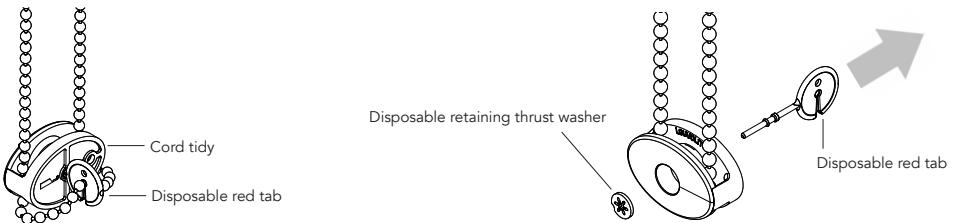
### TENSIONED SYSTEM USING CORD TIDY

If the blind is fitted with a continuous loop chain then a cord tidy will be attached to the chain. This must be fitted to the wall as shown.

### FITTING A SIDE FIX CORD TIDY

The cord tidy is a two piece device and will arrive with a disposable red tab fitted to it.

Remove the disposable red tab by disengaging it from the chain and then pull out the disposable red tab.

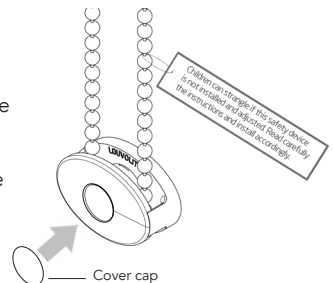


Position the cord tidy to the wall at the furthest distance below the roller tube adding appropriate tension to the chain and mark its location.

Split the cord tidy and mark the remaining offset hole position before drilling and plugging both location holes if necessary.

Screw into the offset hole to fix the back piece of the cord tidy to the wall. Re-assemble the cord tidy with the chain and fix it in previously marked position with a screw through the centre hole.

Push fit a cover cap over the screw hole opening.



## FITTING A FACE FIX CORD TIDY

Position the face fix cord tidy to the wall at the furthest distance below the headrail adding appropriate tension to the chain and mark its location.

Mark the remaining hole position before drilling and plugging both location holes if necessary.

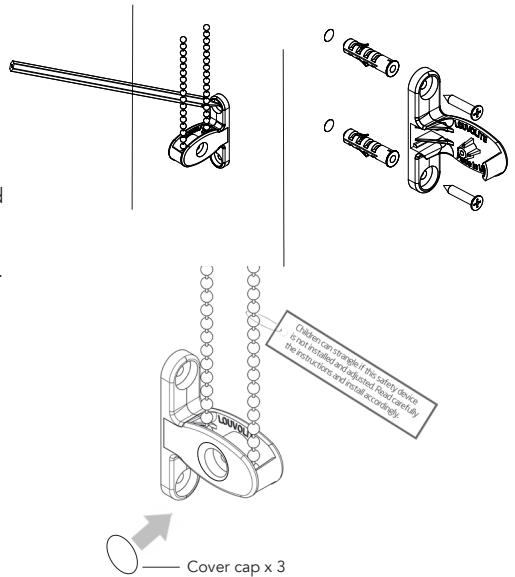
Attach the cord cover plate with the screw provided.

Push fit a cover cap over the screw hole opening.

## OPERATING THE BLIND.

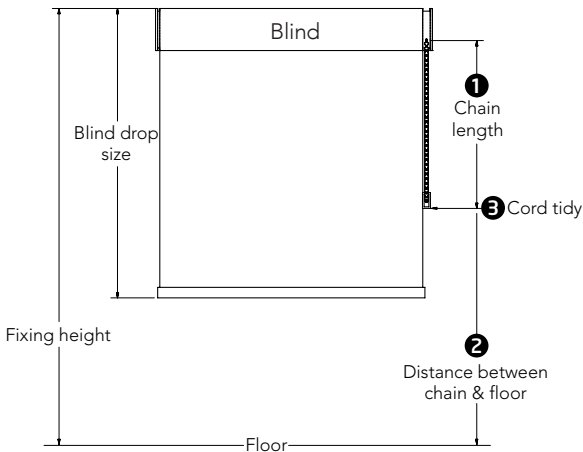
In order to lower the blind, pull the rearmost length of chain downwards with a smooth and steady pressure. To roll the blind up do the same on the front length of chain.

For a reverse roll blind the opposite is true, to lower use the front chain and to raise, use the rear chain.



## CHILD SAFETY - BS EN 13120 GUIDELINES FOR CORDED BLINDS

### Tensioned System with Cord Tidy



- |   |   |
|---|---|
| 1 | <p><b>If fixing height is unknown</b></p> <ul style="list-style-type: none"> <li>- Blind drop <math>\leq</math> 2.5 metres, the chain length must be <math>\leq</math> 1 metre.</li> <li>- Blind drop <math>&gt;</math> 2.5 metres, the chain length must be drop of blind minus 1.5 metres.</li> </ul> |
| 2 | <p><b>If fixing height known</b></p> <p>All blind drop sizes, distance between floor and bottom of chain must be greater than 1.5 metres.</p>   |
| 3 | <p><b>Cord tidy</b></p> <p>Affix a cord tidy to the wall at the maximum distance possible from the blind control mechanism ensuring all operating cords are taut (chain no more than 50mm apart at entry/exit of cord tidy).</p>  |