

# R1720 REMOTE CONTROL

## FOR USE WITH R1710 LITHIUM RE-CHARGEABLE MOTOR

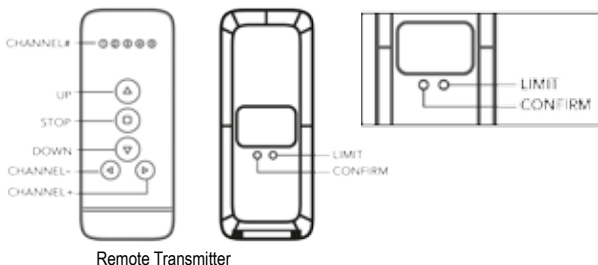
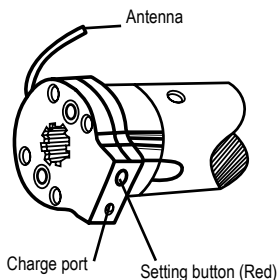
programming instructions

### SET-UP AND OPERATION

---

BATTERY SPECIFICATION: Li-ion battery, 2000mAh, 7.4V.

MOTOR TORQUE/SPEED: 1.1Nm/25rpm



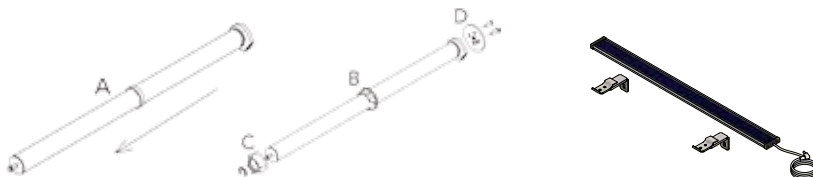
#### SETTING UP THE MOTOR

- The side of the motor mount with the SETTING button should face you.
- The motor antenna should be as straight as possible; otherwise the receiving distance will be reduced.
- Charging - The motor works with Li-ion battery, please charge when the motor stops working or falters please charge the motor by charger. Charging time with the charger is 5 to 6 hours. Please do not leave the motor on permanent charge as this will reduce battery performance.

NOTE: On receiving the motor we recommend fully charging.

### MOTOR ASSEMBLY

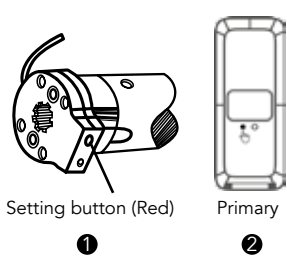
---



- Remove grease protector ring by opening the split ring and sliding off the motor body
- Fit crown by opening the split ring and slide along the motor body until it meets the motor head.
- Fit the drive using the cir-clip to secure in position.
- Attached motor plate with the screws supplied in either left hand or right hand orientation as required.

#### ATTACHING THE SOLAR PANEL

- Make sure the motor has enough charge to operate the blind.
- Attach the solar panel to the charge port on the motor using the 1.5m charge cable.
- Place/ fix the solar panel so that it is facing direct sunlight.

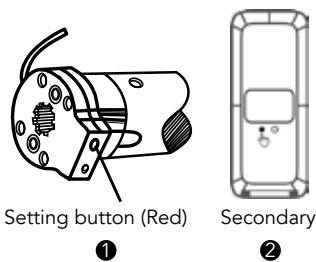


Setting button (Red)

①

Primary

②



Setting button (Red)

①

Secondary

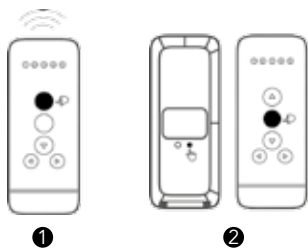
②

### PAIRING THE REMOTE WITH THE MOTOR

1. Select the channel for the blind using the CHANNEL +/- button.
2. Hold down the SETTING button on the motor until it jogs 2 times and then release the button.
3. Press the CONFIRM button within 10 seconds. The motor will jog 2 times and the remote is now paired with the motor.

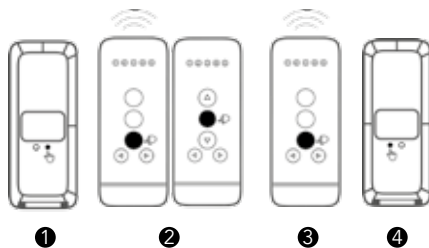
### PAIRING AN ADDITIONAL REMOTE WITH THE MOTOR

1. Hold down the SETTING button on the motor until it jogs 2 times and then release the button.
2. Press the CONFIRM button within 10 seconds. The motor will jog 2 times and the remote is now paired with the motor.



①

②



①

②

③

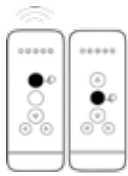
④

### CHANGE MOTOR DIRECTION

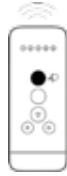
1. Press UP button on the remote, if the blind goes up then the motor direction is okay.
2. To change the motor direction hold down the LIMIT button and then press STOP button on the remote transmitter, the motor will jog to indicate the direction has been changed.

### SET-UP LOWER LIMIT

1. Press and hold the LIMIT button on the remote until the motor jogs 4 times and then release the button.
2. Press DOWN button on the remote to move the blind down and press STOP when desired lower limit is reached.
3. To set the lower limit more accurately press DOWN and the motor will run down in steps.
4. Press CONFIRM button on the remote and the motor will jog 2 times, the lower limit is set.



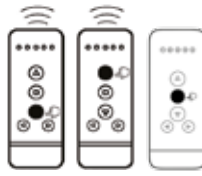
5



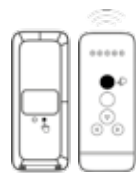
6



7



8



9



10

#### SET-UP UPPER LIMIT

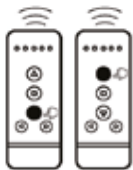
5. Press UP button on the remote to move the blind up and press STOP when desired upper limit is reached.
6. Press UP button and the motor will run steps to set the upper limit accurately.
7. Press CONFIRM button on the remote and the motor will jog 2 times, the upper limit is set.

#### SET-UP MID-POINT LIMIT

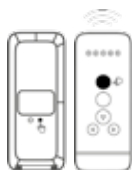
8. Press UP or DOWN button on the remote to move the blind and press STOP when desired mid-point limit is reached.
9. Press and hold the LIMIT button first then whilst holding LIMIT press UP button on the remote until the motor jogs. Mid-point is now set.
10. Press STOP to move the blind to Mid-point position.

#### PLEASE NOTE

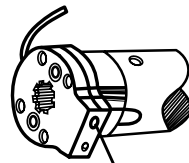
The group channel will be recorded on the motor automatically when the single channel has been programmed on the motor. Cycle through the channels until all the lights are lit to access the group channel on the remote.



11



12



Setting button (Red)

1

#### DELETE MID-POINT LIMIT

11. Press UP or DOWN button on the remote to send blind to upper or lower limit.
12. Press and hold LIMIT button first then whilst holding LIMIT press UP on the remote until the motor jogs. Mid-point is now deleted.

#### DELETE ORIGINAL HANDSET ON MOTOR

1. Press and hold SETTING button on the motor mount and the motor will jog (2-3 times in one motion) and then release the button.

#### FAQ: IF THE MOTOR DOES NOT WORK

- Please charge the motor battery first.
- If the motor does not stop at the required point, then the stops must be reset.

# R1710 SAFETY INSTRUCTIONS

---

**WARNING:** Important safety instructions. Follow all instructions, since incorrect installation can lead to severe injury. Please save these Instructions.

Before installing the drive, remove any unnecessary cords and remove any equipment not needed for powered operation.

Install the actuating member of a manual release at a height less than 1.8m.

1. Instructions for use are provided with the appliance so that the appliance can be used safely.
2. If it is necessary to take precautions during installation of the appliance, appropriate details shall be provided in the instructions.
3. Appliance must only be used to drive blinds.
4. Only use supplied driven parts for use with this motor appliance.
5. Motor appliance to be supplied from a separate power supply unit (AC/DC Charger), the instructions to state that the appliance is only to be used with the power supply unit provided.
6. Motor appliance must only be supplied by a SELV source.
7. Keep the product number and data plate in safe place.
8. This appliance is not intended for use by persons (including children) with reduced physical, sensory or mental capabilities, or lack of experience and knowledge, unless they have been given supervision or instruction concerning use of the appliance by a person responsible for their safety.
9. Children should be supervised to ensure that they do not play with the appliance.
10. Do not allow children to play with fixed controls. Keep remote controls away from children.
11. Frequently examine the installation for imbalance and signs of wear or damage to cables and springs. Do not use if repair or adjustment is necessary.
12. Do not store the motor with strong acid, alkaline, dirty or eroding materials.
13. Do not use the motor in a humid or damp environment.
14. Do not start the motor frequently or overload it as it might reduce the life of the motor.
15. Do not turn the regulating knob or the driving sleeve at non-operation state.
16. Do not operate the blind during maintenance (such as window cleaning) is being carried out in the vicinity etc.