

# R1912 AND R1918 MOTOR FOR USE WITH R1932 WALL TIMER EMITTER

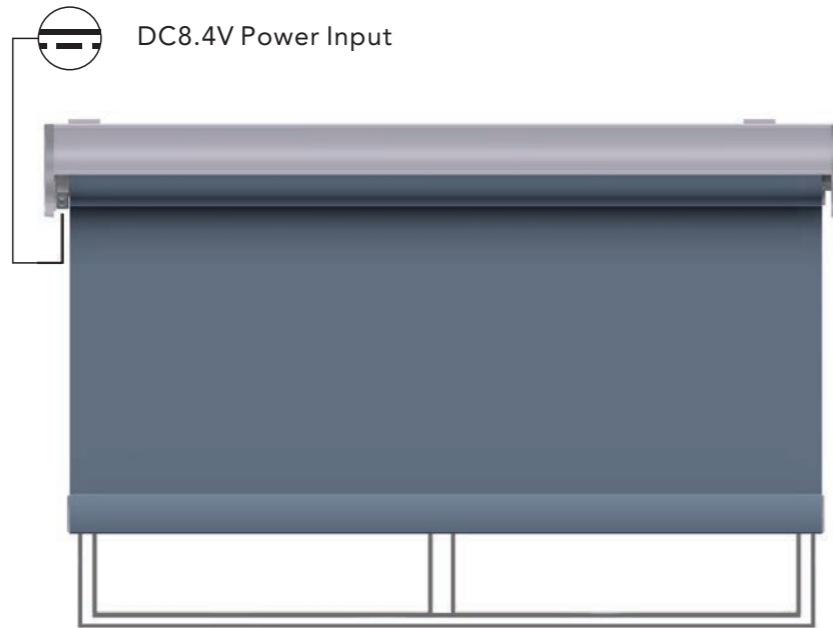
## Operating Instructions

### KEY FEATURES

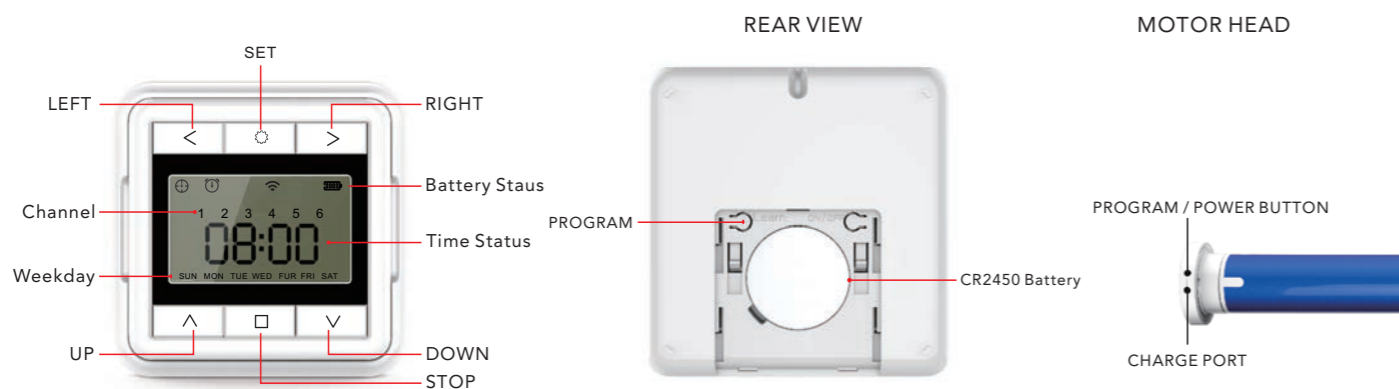
- DC power supply with energy saving patented design, 7.4V 3000mAh Lithium battery built-in (1.8Nm). 7.4V 2600mAh Lithium battery built-in (1.2Nm).
- Setting limits by remote control. Up to 6 limits, including Upper/Lower limit and 4 intermediate limit positions.
- 433.92MHz Radio Control.
- Short/Open Circuit Protection.
- Automatic alarm buzzer for low battery, then the motor will enter into jog mode.
- Patented helical gear design, noise level lowered to 30dB.

### POWER SOURCE THE CHARGING OPTIONS

Built-in Li-ion battery power supply. Recharged using an external charger. On a full charge can be used for 3-6 months. Charging time is 6-8 hours.



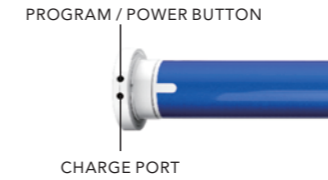
### WALL TIMER EMITTER THE LAYOUT



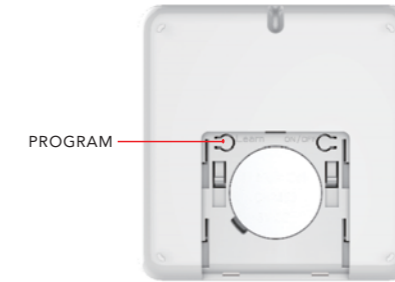
- LEFT/RIGHT: channel shift, current system time /working mode setting shift, days selection
- UP/DOWN: motor direction changing, figures selection, channel selection
- SET: long press 3s to get into setting mode, long press 3s to save setting
- STOP: stop, change setting items in setting page, long press 3s to exit setting mode (won't save setting)
- The user can start to set timing point until the system time of the timer is set.

### SETTING THE BLIND

#### MOTOR HEAD

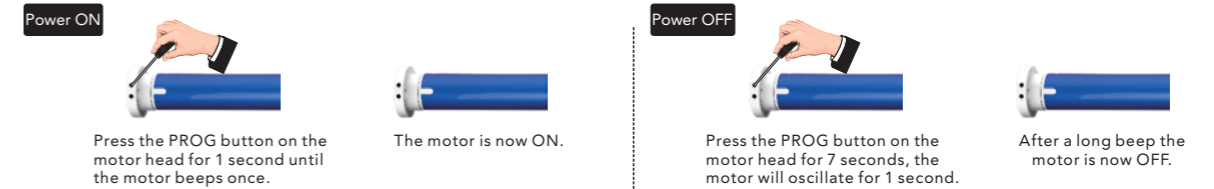


#### WALL TIMER EMITTER



### POWER ON/OFF THE BLIND

After switching off power the motor will not be able to receive remote signals.



### PAIRING WALL EMITTER

Multiple controllers can be linked to one blind

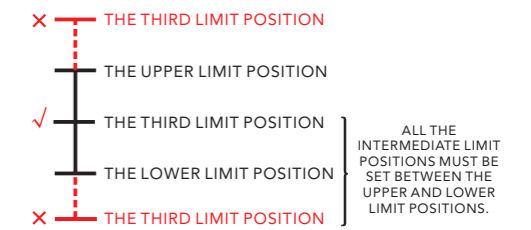


### CHANGE DIRECTION

If there is a need polarity can be reversed. Wait 30 seconds since last command.

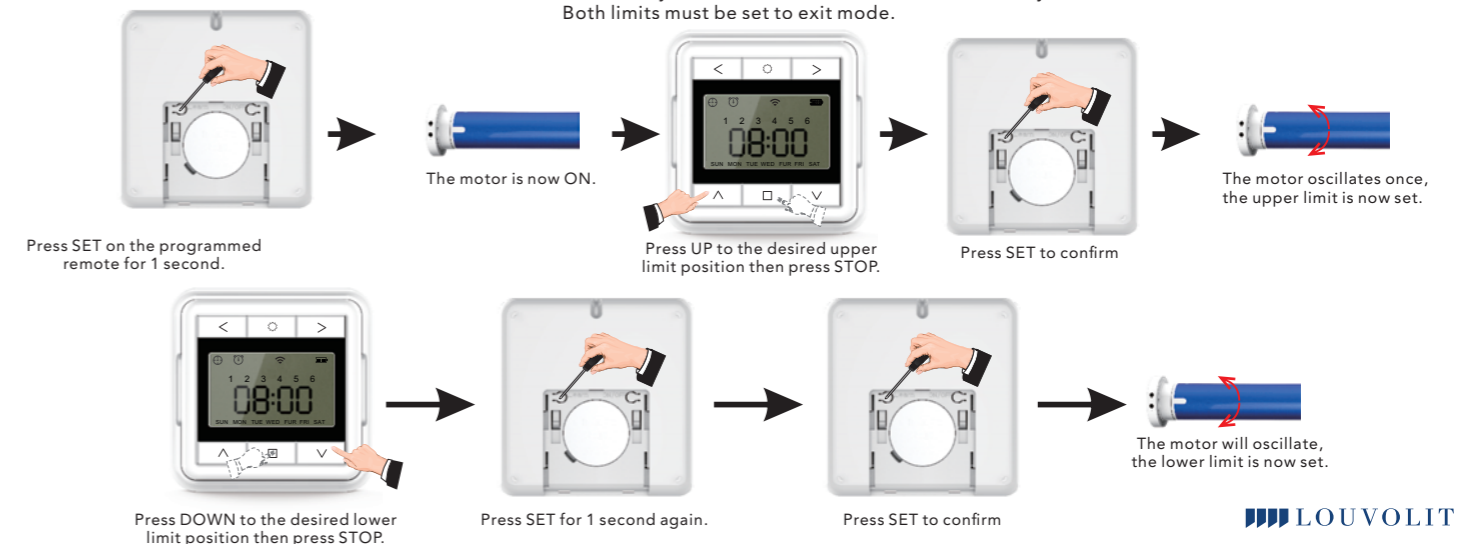
### LIMIT POSITION

- 1). The first and second positions are Upper/Lower limit positions. The other four are intermediate positions.
- 2). After the Upper/Lower limit positions are set, all the intermediate positions must be set between the Upper and Lower limit.
- 3). The Upper and Lower limit position can be fine-tuned once set. The Upper Limit can only be removed by deleting all the motor memory.
- 4). Press the UP or DOWN button once and the motor will move to the next pre-set limit position. When the upper position has been reached the UP button will be unresponsive. When the lower position has been reached the down button will become unresponsive.
- 5). Press and hold the UP or DOWN button until the indicator on the programmed channel flashes twice, release, then the motor will move to the Upper or Lower limit position without stopping at any intermediate position.



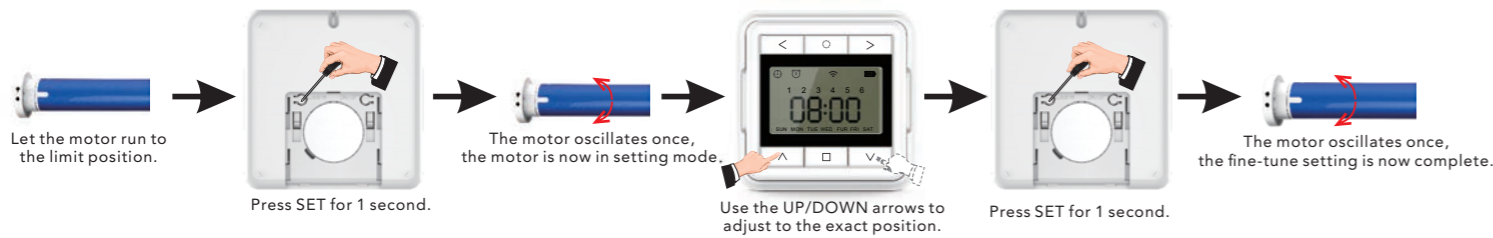
### SETTING UPPER AND LOWER LIMIT

Once the limits are set the system will exit the command automatically. Both limits must be set to exit mode.

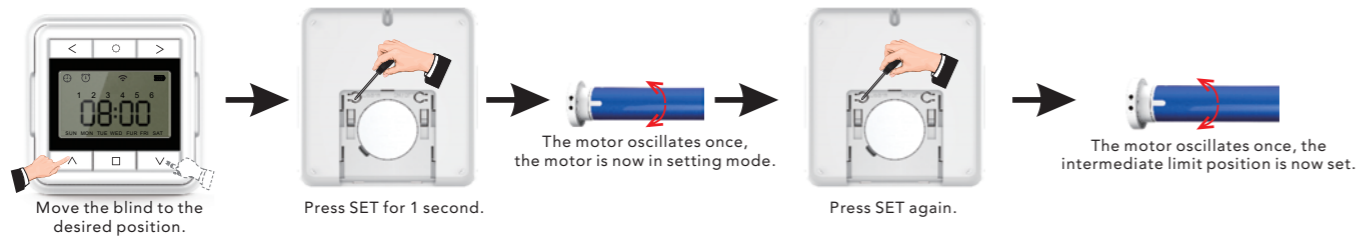


## FINE-TUNING LIMIT POSITIONS

Limits can be fine tuned individually. If there is no activity for 30 seconds the system will exit the command automatically.

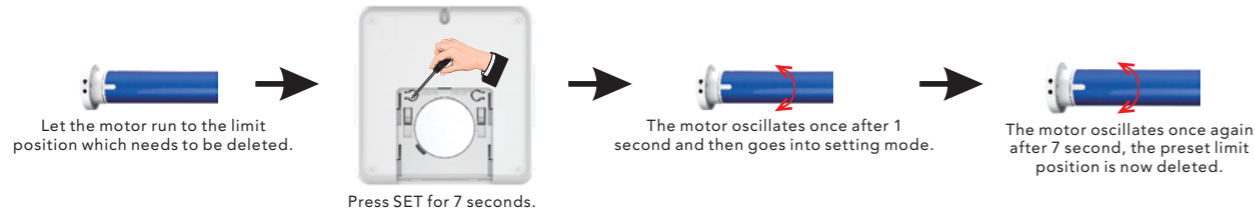


## SETTING INTERMEDIATE LIMITS



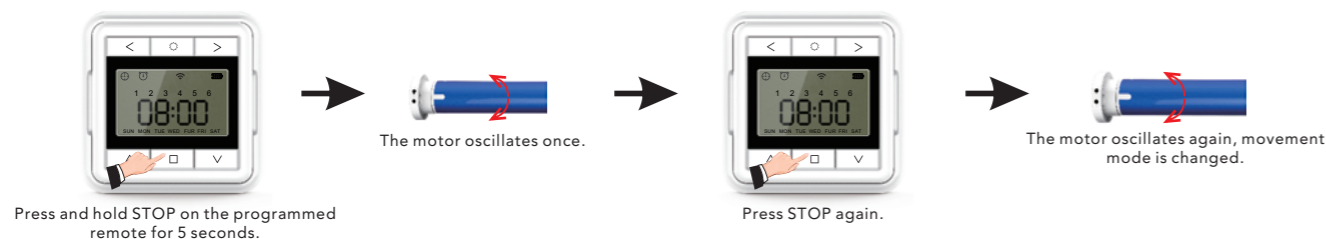
## DELETING LIMIT POSITIONS

The first limit set cannot be deleted separately, to remove this limit all limits must be deleted.

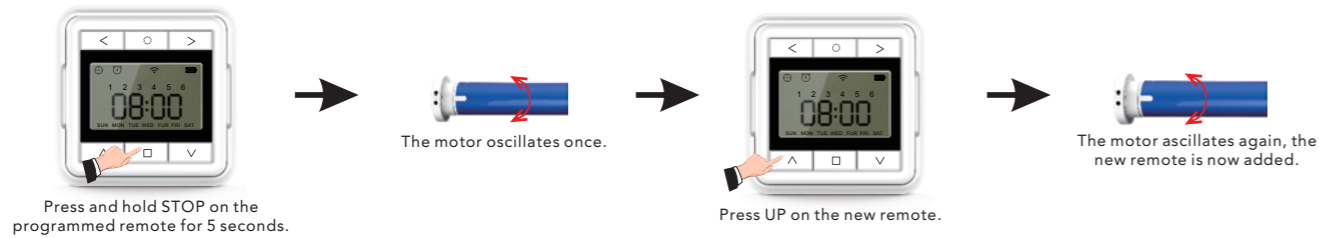


## JOG MODE

The default movement of the motor is continuous, can be changed to jog movement or back to continuous movement for blind positioning or during fine tuning mode.

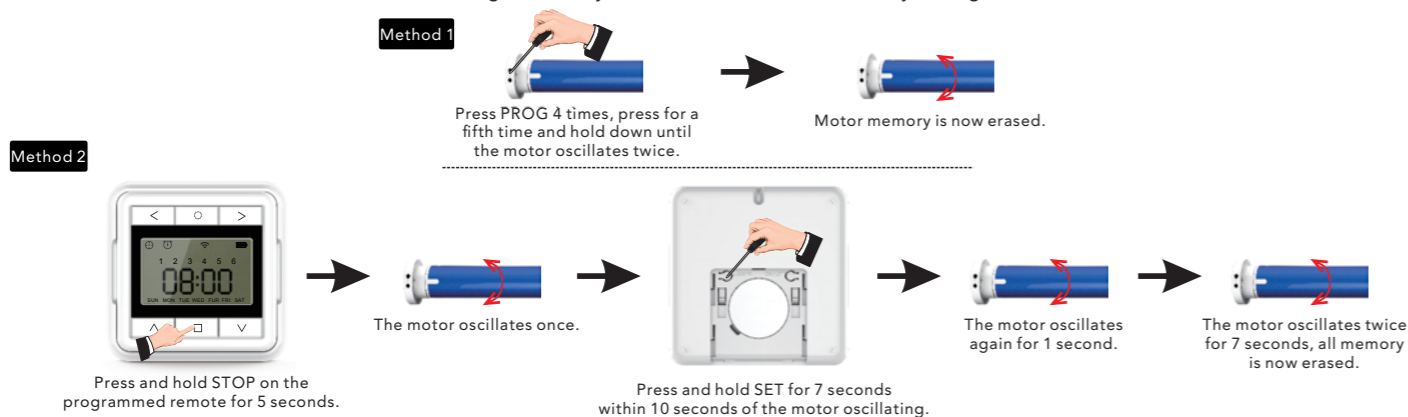


## ADD REMOTE



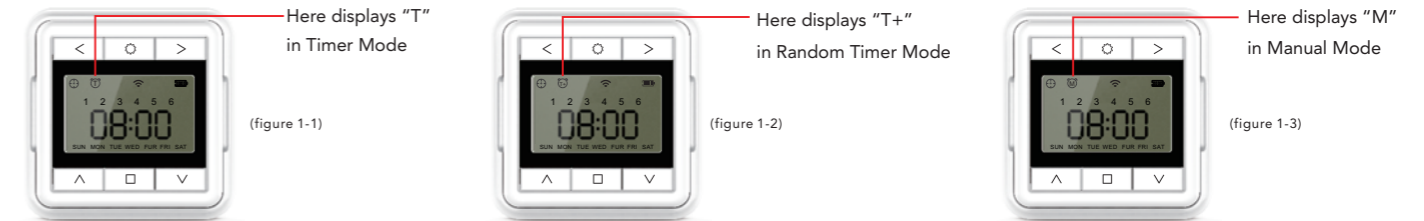
## DELETE ALL MEMORY

Deleting all memory returns the motor back to factory settings.



## Work Mode Switching

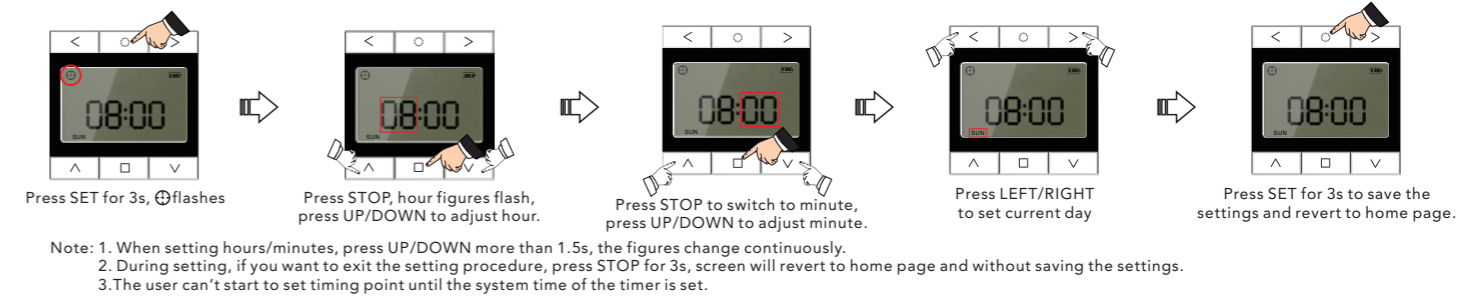
Timer Remote With Manual Click Buttons Instruction



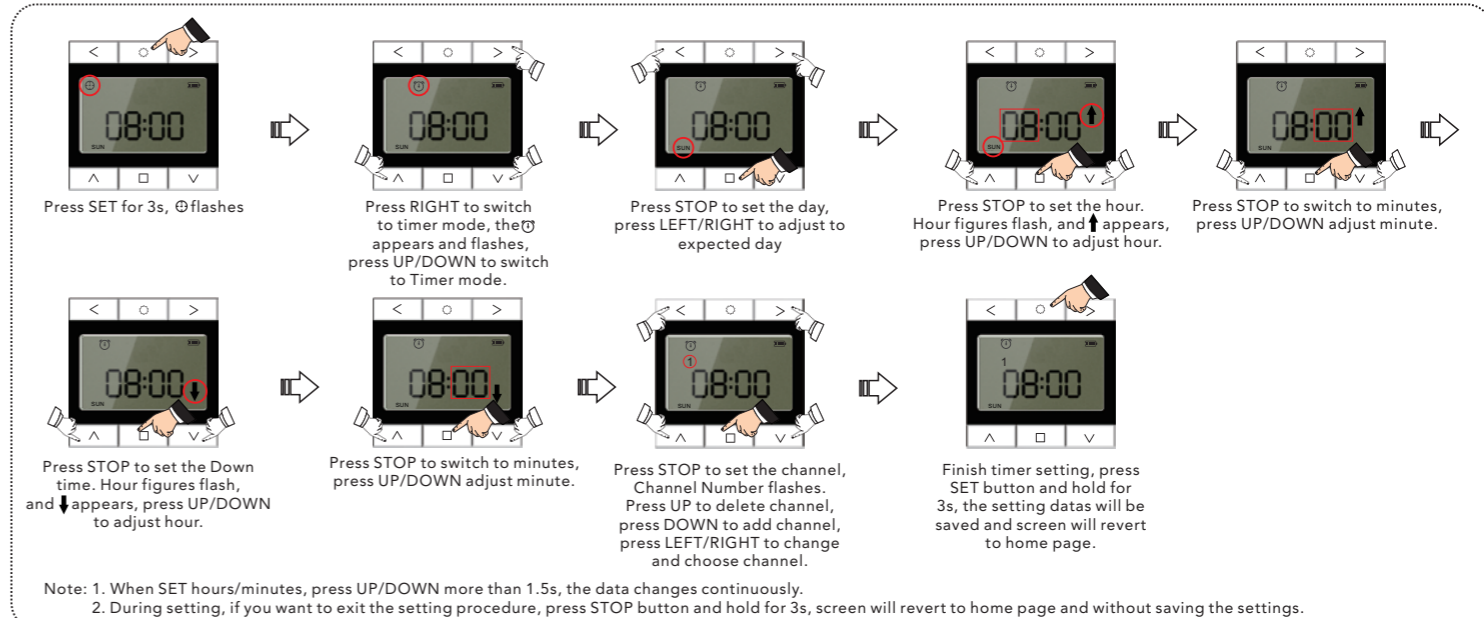
T: Timer mode (figure 1-1)  
 Mon-Sun: every day has different UP/DOWN time, you set day by day  
 Mon-Sun: the same UP/DOWN time applied to every day, you set once for 7 days  
 Mon-Fri /Sat + Sun: Mon-Fri has same UP/DOWN time, you set once for 5 days. Sat + Sun has same UP/DOWN time, you set once for 2 days.  
 T+: Random Timer Mode (figure 1-2)  
 Timer functions with random function—runs automatically based on T mode, the timing points will fluctuate  $\pm 15$ mins from corresponding T mode.  
 M: Manual mode (figure 1-3)  
 No timer function  
 Working mode selection: In the home page, press SET for 3s,  $\oplus$  flashes, press RIGHT to switch to T Mode, press DOWN to switch T, T+, M, save your selection by long pressing SET button 3s. Or only exit the setting by long pressing STOP button 3s. (won't save setting).

## Operating Instructions

A. Current/System Time Setting (In the home page, switch mode to Manual mode, then follow below steps)



B. Timer setting  
 In the home page, switch mode to timer mode, then follow below steps: (the channel selection is the last thing you do. The sequence is : day, hr/UP, min/UP, hr/DOWN, min/DOWN, Channel).



## Operating Instructions

	ISSUE	CAUSE	SOLUTION
1	Motor does not run or runs slowly	Over-Load Protection	Motor has been operated frequently in a short space of time or is being operated in hot conditions. Allow the motor to cool before next operation.
2	Motor does not run or runs slowly	Motor Has Reached its Limit	Motor has reached a preset limit. Operate the blind in the opposite direction and check for movement.
3	Motor does not run or runs slowly	Out of Battery	Recharge the battery.
4	Motor does not run or runs slowly	In Power Off Mode	Turn power on to the motor.
5	If screen is incomplete and not clear	Battery level low	Change battery
6	Poor remote sensitivity	Check installation position for metal obstructions	Re-position unit
7	No response after pressing buttons	1) Screen is frozen, 2) press correct button for procedure	1) remove the battery and replace, 2) press correct button for procedure