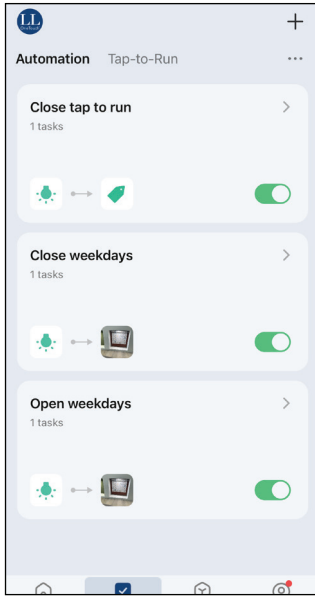
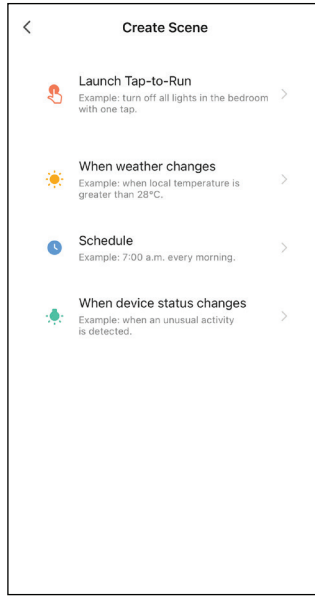


Setting Schedule Scenes

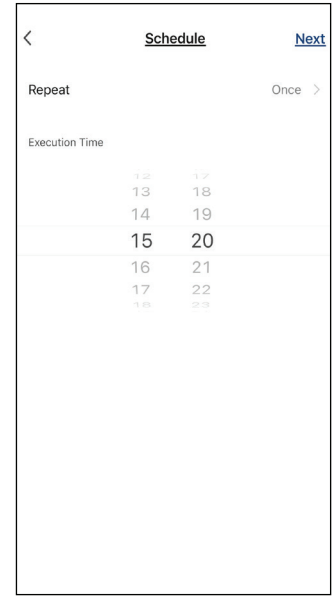
1) Press '+' button to create scene.



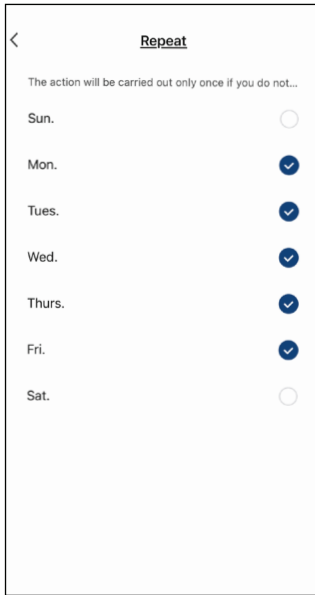
2) Select 'Schedule'.



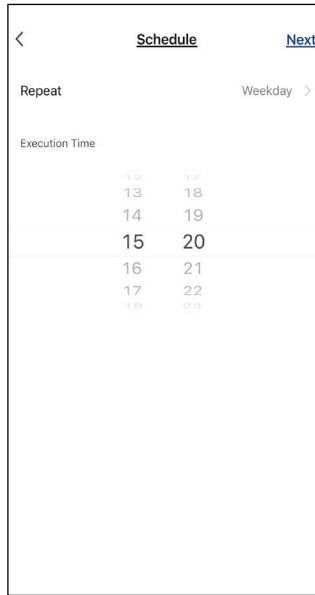
3) Set time for operation then press 'Once' to set 'Repeat'.



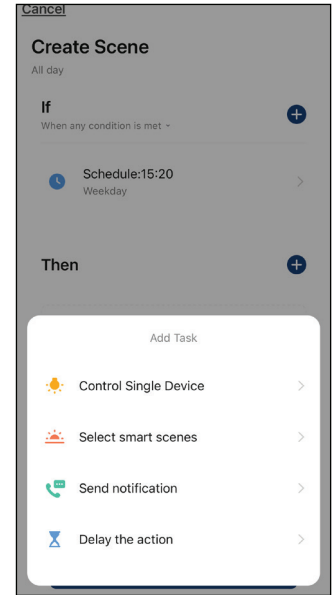
4) Select days of the week for action 'Repeat'.



5) Press 'Next'.



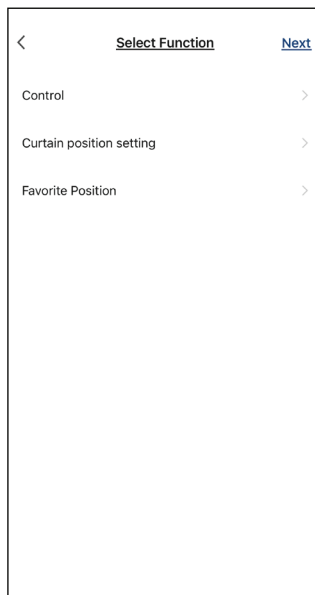
6) Choose 'Control Single Device' or 'Select Smart Scenes'.



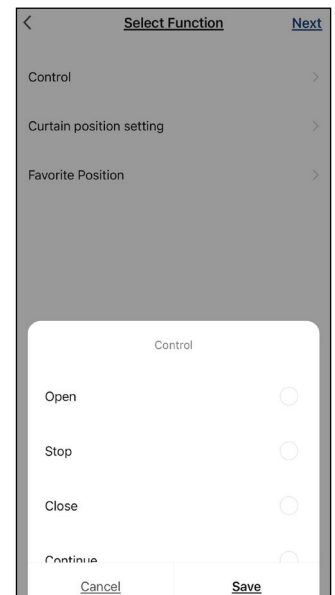
7) For 'Single Device' select device.



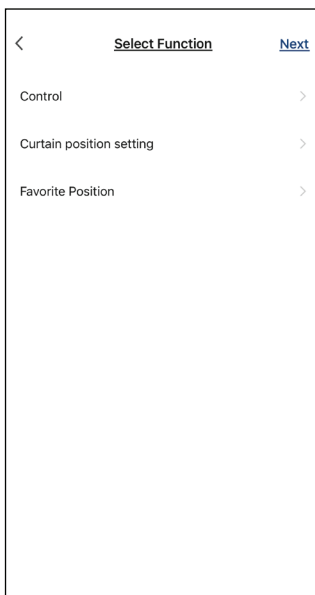
8) Select Function.



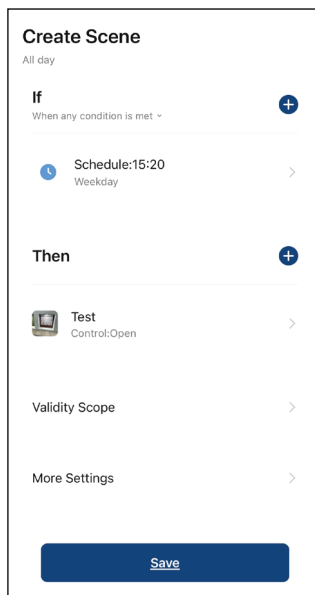
9) Select 'Control'. Choose desired operation and press 'Save'.



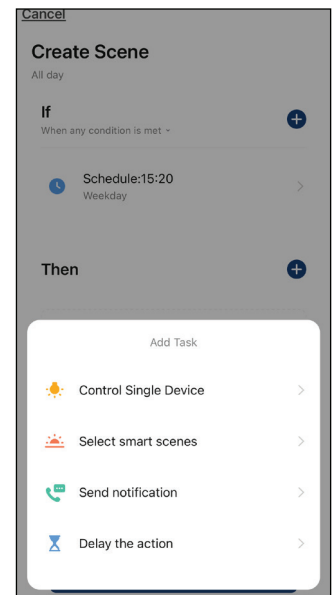
9) Press 'Next'.



10) Press 'Save' to end or press '+' to add more blinds.



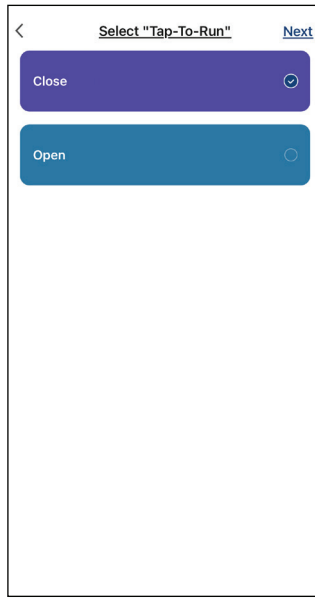
11) Choose 'Select Smart Scenes' if 'Tap-to-Run' scenes have been created.



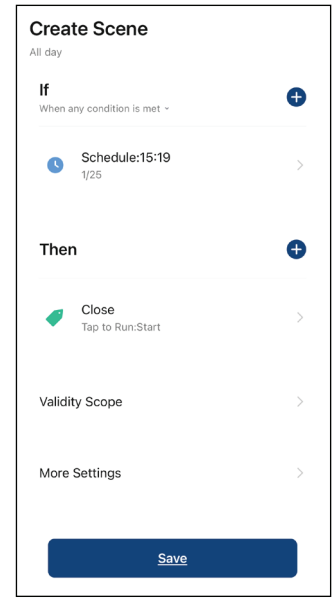
12) Select 'Tap-to-Run'.



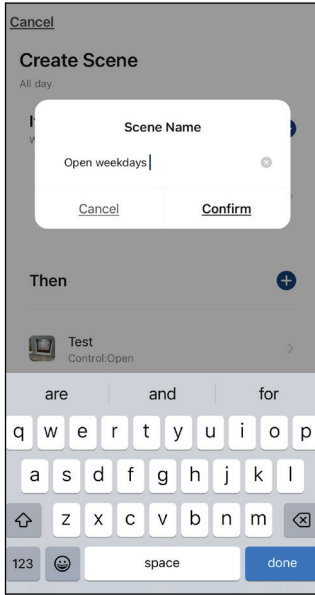
13) Select 'Open' or 'Close' to create scene.



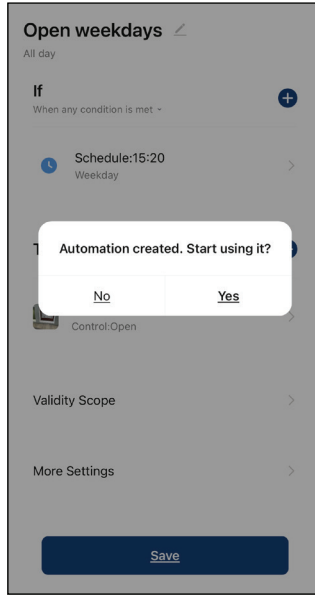
14) Press 'Save'.



15) Create a 'Scene Name' and press 'Confirm'.



15) Select 'Yes' to run.



16) Menu Page to test or action scenes/times.

