

# OneTouch<sup>®</sup>

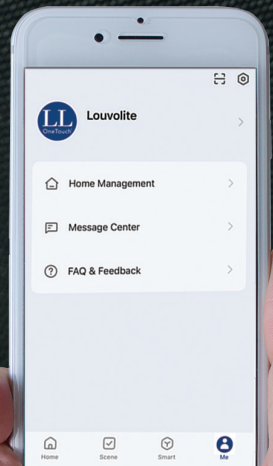
ADVANCED LIGHT CONTROL



## Smart Hub

Connecting to Amazon Alexa  
& Google Home  
Step by Step Guide

 LOUVOLITE



## How to Connect Amazon Alexa

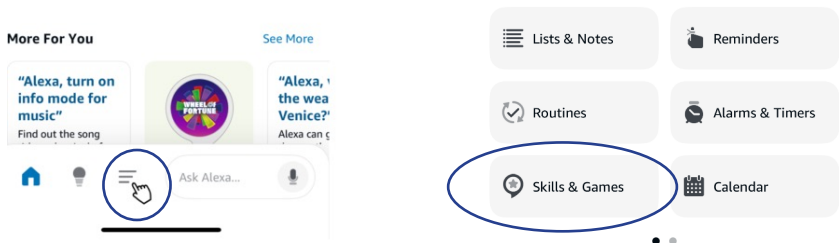
If you have two or more Smart Hub Controller, please note that all Controllers need to be online in order for Alexa to work properly.

Amazon Alexa is being sold in several countries, including US, UK, Canada, Australia, New Zealand and India. Our Amazon Alexa Skill is available in English in 5 locales (UK, US, CA, AU, IN).

You can connect your Smart Hub Controller to your Amazon Echo, Echo Dot or Echo Show and use voice commands via Alexa to control your blinds. All you need is to have the Amazon Alexa app in your device with an account set up and follow the steps below.

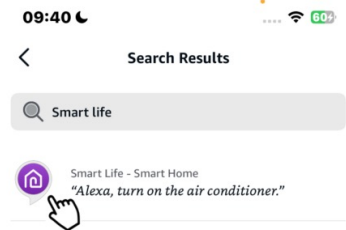
### 1. Access Skills & Games

Open the Amazon Alexa app on your device and tap on the menu located in the bottom left corner. Then, tap on "Skills & Games".



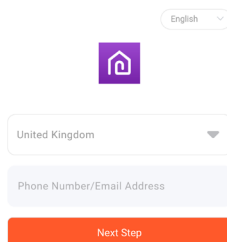
### 2. Enable 'Smart Life Smart Home'

Input "Smart Life-Smart Home" in the search box, select and click the "Smart Life-Smart Home" icon, then click "ENABLE TO USE"



### 3. Enter your login information for your Home Hub Controllers

Click "Log in" and log in your account and fill in your email and account information.

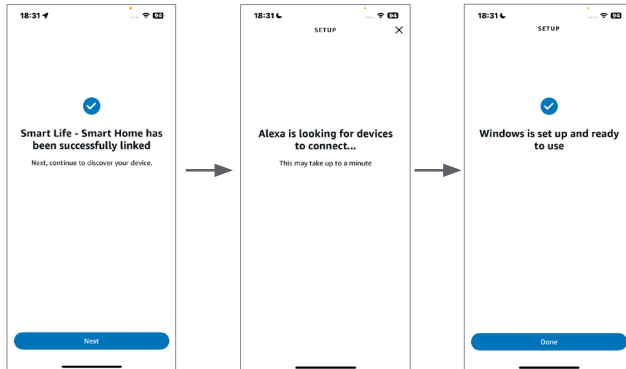


#### 4. Authorise Amazon Alexa

Before accepting, make sure your Home Hub Controller is online (plugged into the wall charger and with pulsing cyan/blue-green LED). Tap on the Authorize button.

After logging in successfully, click "Next" to look for your device.

Click "Done" to finish adding your device.



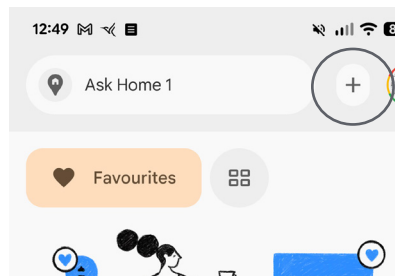
#### How To Connect To Google Assistant

You will need the Google Home app and a Google Assistant enabled device (speaker or phone).

##### 1. Tap on "Add"

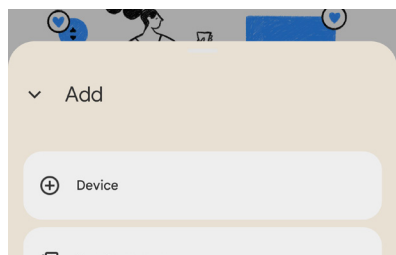
Open the Google Home app, then tap on the plus button.

If you have multiple Google accounts, make sure you are using the one linked to your Google Assistant enabled device. To switch accounts, tap on the user button, located on the navigation bar located on the bottom right corner of the screen.



##### 2. Choose the option "Set up device"

On the Add screen, tap on the option "Set up device".



## Add devices to Google Home



Scan QR code  
Matter-enabled or Nest devices



Search for device  
Nest, Chromecast, Google Assistant-enabled devices or partner devices



Link apps or services  
Works with Google Home devices and services set up in a different app

1

3. Click on the "link apps or services and link to 'Smart Life Smart Home'" **1**
4. Select "Smart Life Home" from the list of services to begin linking your account. **2**
5. Follow the onscreen prompts **3** and **4** to link your Google Home account to Smart Life Smart home.
6. Login to Tuya with Louvolite One Touch login details, authorise and then 'Smart Life Smart Home' will be successfully linked. **5**



Smart Life - Smart Home



SMART LIFE by TechZone

Smart Life for ABLIGO

2



When you link your Google Account and Smart Life - Smart Home account

Google will be able to

See info about your connected smart home devices

Control your connected smart home devices, when you ask

Where you can change this link

To make changes, go to your [Google Account](#).

Find out how Google helps you [share data safely](#).

Review Google's [Privacy Policy](#) and [Terms of Service](#) to understand how Google will process and protect your data.

[Cancel](#)

[Agree and continue](#)

3



Link an account to control Smart Life - Smart Home on any device



This link will be available on devices or services where you've signed in to your Google Account.

[Cancel](#)

[Continue](#)

4

Account linked successfully.

5

If you require any assistance then please contact Louvolite tech support on: +44 (0)161 882 5000 or send your enquiry to [onetouchsupport@louvolite.com](mailto:onetouchsupport@louvolite.com)